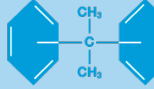


# EPOPLEX



## MA50

### PRODUCT DATA

#### PRODUCT DESCRIPTION

Epoplex MA50 is a two-component, epoxy polyamine, 100% solids adhesive. Its durability, along with high chemical and abrasion resistance, makes it an extremely effective bonding material suitable for various applications. Epoplex MA50 is formulated to provide a simple volumetric mixing ratio of one volume of Component A to one volume of Component B. Epoplex MA50 is formulated to meet the requirements set forth in AASHTO M 237, Type IV.

#### USES, APPLICATIONS

Epoplex MA50 is recommended for use as an adherent of pavement markers to highway surfaces. It may also be applied as a heavy duty bonding and/or patching material to various surfaces. Epoplex MA50 can be installed at temperatures between 32°F/0°C and 110°F/43°C.

#### PRODUCT ADVANTAGES

- 100% solids chemistry; no solvents
- Long-term corrosion resistance
- Superior chemical and oil resistance
- Superior vibration resistance against heavy highway traffic
- Excellent bond strength assures superior adhesion to both asphalt and concrete surfaces
- Minimal shrinkage upon cure
- Insensitive to excessive moisture resulting from various weather and road conditions (in the cured state)
- High compressive and tensile strengths
- Excellent mechanical strength

#### STORAGE CONDITIONS

Store all Epoplex MA50 components at or above 50°F/10°C in a dry area. Avoid excessive heat. Do not freeze. The shelf life is 2 years in the original, unopened container.

#### IMPORTANT:

Epoplex believes the information contained here to be true and accurate. Information contained here is for evaluation only. Epoplex makes no warranty, expressed or implied, based on this literature. We further reserve the right to modify and change products or literature at any time.

Rev. 10/19  
© 2019 Epoplex

#### PHYSICAL CHARACTERISTICS

<b>Percent Solids</b>	.....100%
<b>Pot Life</b>	.....10 Minutes (@ 77°F/25°C)
<b>Tensile Strength</b>	.....2,900 psi (ASTM D-638)
<b>Tensile Bond Strength</b>	......300 psi (ACI 550) (100% concrete failure)
<b>Viscosity</b>	......30,000-50,000 cps
<b>Weight per gallon</b>	.....Part A = 11.8 lbs. Part B = 11.4 lbs.
<b>Adhesive Strength</b>	......220 psi (MIL-D-24613)
<b>Compressive Strength</b>	......11,000 psi (ASTM C-695)

**Note:** All properties are tested at 7 days unless otherwise noted.

#### PACKAGING

**Component A:** Epoxy Base Resin  
**Component B:** Activator/Curing Agent

Both components are available in 5 gallon pails and 250 gallon totes.

**Note:** Quick-Kit tubes are also available.

